



FENSTELA[®]
ALUMINIUM DOOR & WINDOW

Project Name:
Address:
Client Name:
Date:





OUR STORY

Sejarah **FENSTELA** dimulai dari *40 tahun* yang lalu, di mana pada saat itu kami mengawali bisnis sebagai tukang pasang pintu dan jendela aluminium, atau yang lebih dikenal dengan sebutan “Aplikator”.

Puluhan tahun berlalu, ratusan proyek telah kami selesaikan, baik itu high rise, low rise, perkantoran, pabrik, gudang, perumahan, maupun rumah-rumah pribadi.

Tahun 2008 kami memberanikan diri mendirikan pabrik perakitan barang jadi pintu dan jendela aluminium, yang kita kenal dengan nama produk **FENSTELA**.

Semua profil aluminium didesain oleh kami sendiri, dan diproduksi di Indonesia, dengan memperhitungkan aspek kekuatan, keindahan dan kemudahan dalam pengoperasian.

VISI KAMI

Menjadi produsen dan aplikator kusen pintu dan jendela aluminium premium terbaik dan terpercaya di Indonesia.

MISI KAMI

Membuat produk kusen pintu dan jendela yang berkualitas tinggi, serta didukung dengan pemasangan yang tepat waktu dan sempurna sesuai dengan standar FENSTELA.

Menyediakan layanan purna jual yang terpercaya, cepat tanggap, dan proaktif dalam menangani komplain dari customer.

Terus berinovasi dalam pengembangan produk dan beradaptasi terhadap perubahan tren desain.

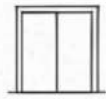


WHY FENSTELA

- We have installed aluminium doors and windows for almost 40 years.
- All profiles are authentically designed by FENSTELA and 100% produced in Indonesia.
- All profiles are made of alloy 6063-t5, and extruded from premium billet.
- We use 25 years Super Durable grade powder coating (AAMA 2604).
- FENSTELA has issued 20 years warranty for powder coating and 10 years warranty for the aluminium doors and windows systems including all mechanical hardware.
- FENSTELA doors and windows are designed to be waterproof and provide a great acoustic performance for sound insulation.
- Lifetime warranty from corrosion.
- FENSTELA is one of the manufacturers of thermal break profiles in Indonesia.



OUR PRODUCTS

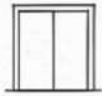


NEW CASEMENT WINDOW
AND DOOR (CW50)



- Modern designed 50mm frames and sashes with minimum 15mm thickness.
- Newly designed sashes (modern minimalist curve).
- Two side continuous EPDM foam rubber seal to increase the water tightness and sound insulation.
- New baseless handle (Milan type).
- New heavy duty friction hinge to accommodate 3,200mm height and 1,000 width.
- New locking hardware to tighten the locking system.
- Can Accommodate double glazing and BBC until 35mm thickness.

OUR PRODUCTS



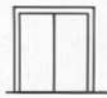
NEW LIFT AND SLIDE SLIDING DOOR LS98 & LS23 SERIES

- Newly designed flat bottom frame with excellent water drain.
- Newly designed sashes with modern curve.
- Stainless steel bottom track for smoother performance.
- Adjustable heavy duty nylon twin roller for best durability and smoothness.
- New hardware to increase the tightness of the locking system.
- Using premium pile weather strip to enhance the sound insulation.
- Can accommodate double glazing and BBG until 35mm thickness.
- Dimension of the sash can be made until 4,000mm height and 2,000 width.
- Every sash can be moved and hold at any distance on the track.
- Can be combined with Ultra Slim Interlock profile (23mm) to provide wider visibility.





OUR PRODUCTS

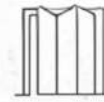


NEW SLIM SLIDING DOOR SS50 & SS23 SERIES

- Newly designed flat bottom frame with excellent water drain.
- Newly designed sashes with modern curve and better visibility.
- Stainless steel bottom track for smoother performance.
- Adjustable heavy duty nylon twin roller for best durability and smoothness.
- New hardware to increase the tightness of the locking system.
- Using premium pile weather strip to enhance the sound insulation.
- Can accommodate double glazing and BGC until 35mm thickness.
- Dimension of the sash can be made until 4,000mm height and 2,000 width.
- Can be combined with Ultra Slim interlock profile (23mm) to provide wider visibility.



OUR PRODUCTS



BIFOLD DOOR (BD80) SERIES

- Special designed bottom frame with perfect water drain system.
- Stainless steel bottom track, for smoother performance.
- Heavy duty twin bottom roller made from stainless steel.
- Heavy duty hinges with foldable pull handle.
- Uniquely designed sash pair with EPDM foam rubber seal for better sound insulation and prevent from being pinched.
- Equipped with inner espagnolette to tighten the locking system.
- Folded sashes will be kept and locked using stopper holes.
- Can be made until 4,000mm height and 1,000 width.
- Can accommodate double glazing and BB until 35mm thickness.



PARTNERS



CMECH



Alesta® SD



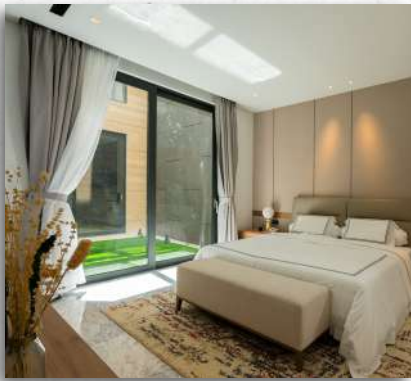
TECHNOFORM



OUR CLIENTS



OUR PROJECTS





CLASSIC

HOTEL

OFFICE

HOTEL